



# Staytite



## RAIL

*Suppliers of Fasteners, Fastener Technology, and Technical  
Expertise to the Rail Industry*



# Intelligent Bolts: How Do They Work?



A gauge pin is fixed within the fastener using a specialised permanent bonding technique; as the bolt is stretched it creates a gap between the pin and the sensor, which the sensor measures and converts to clamp force. The bolt sends data to a gateway, within 1km, which in turn sends the data up to the Cloud, where it can be accessed through a dedicated portal on any wifi-enabled device.



# Intelligent Temporary Rail Clamps

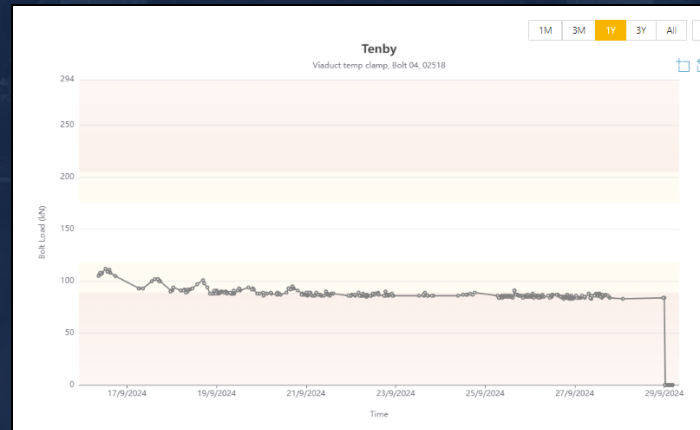
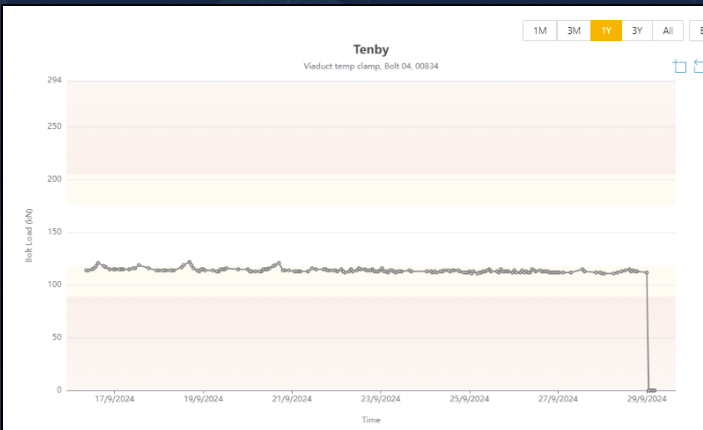
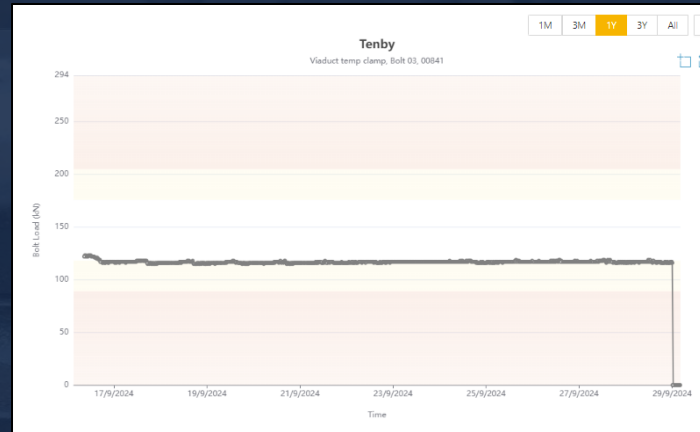


Monitoring temporary rail clamps remotely improves safety and reduces inspection!

tel: +44 (0)1494 462322 – email: [info@staytite.com](mailto:info@staytite.com) – [www.staytite.com](http://www.staytite.com)



# 14 Day Trial of Temporary Intelligent Robel Clamp Installed at Tenby

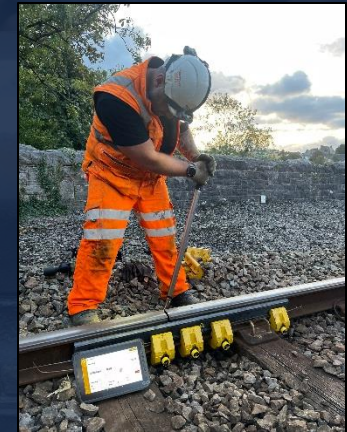


## Robel Clamp:

Dip, Void, and Gap  
Measured on install.

Measurements  
checked after 7 days  
and upon removal.

**No change  
recorded**



Intelligent Temporary Clamps upload  
telemetry to the cloud every 15  
minutes providing 1344 data points  
logged per week.

Note: Temperature also recorded with  
each unique data point.



# Any Questions?

